

NORTH WEST LEICESTERSHIRE DISTRICT COUNCIL

CABINET – 23 JULY 2013

Title of report	COMMUNITY SAFETY STRATEGY 2011-14 (2013 REFRESH)
Key Decision	a) Financial No b) Community Yes
Contacts	Councillor Trevor Pendleton 01509 569746 trevor.pendleton@nwleicestershire.gov.uk Director of Services 01530 454555 steve.bambrick@nwleicestershire.gov.uk Head of Community Services 01530 454832 john.richardson@nwleicestershire.gov.uk
Purpose of report	To ask Cabinet to note changes made to the Community Safety Strategy 2011-14 (2013 refresh). A copy of the revised strategy can be found at Appendix 1.
Reason for Decision	To comply with the Council's constitution and statutory duty to produce a Community Safety Strategy every three years, refreshed annually.
Council Priorities	Homes and Communities
Implications:	The Strategy will inform the Community Safety Partnership's priorities and work agenda for 2013/14.
Financial/Staff	The Partnership receives funding from Leicestershire's Police and Crime Commissioner, NWLDC and Leicestershire County Council to carry out community safety work. The Council's community safety team co-ordinates the work of the Partnership.
Link to relevant CAT	Supporting North West Leicestershire Families CAT
Risk Management	Risk assessments will be completed as appropriate
Equalities Impact Assessment	Equality Impact Assessment already undertaken, any issues identified have been actioned

Human Rights	None discernible
Transformational Government	None discernible
Comments of Head of Paid Service	The report is satisfactory
Comments of Section 151 Officer	The report is satisfactory
Comments of Monitoring Officer	The report is satisfactory
Consultees	- The Safer North West Partnership - Strategic Assessment, of which public consultation informs part of this document
Background papers	- The PCC Police and Crime Plan: http://www.leics.pcc.police.uk/Document-Library/Police--Crime-Plan-for-Leicester-V6-Web.pdf - NWL Strategic Assessment: http://www.lsr-online.org/reports/safer_north_west_partnership_strategic_assessment - Crime and Disorder Act 1998 http://www.legislation.gov.uk/ukpga/1998/37/contents - Police Reform Act 2002 http://www.legislation.gov.uk/ukpga/2002/30/contents - Police and Justice Act 2006 http://www.legislation.gov.uk/ukpga/2006/48/contents
Recommendations	CABINET IS REQUESTED TO: NOTE THE CHANGES TO THE NORTH WEST LEICESTERSHIRE COMMUNITY SAFETY STRATEGY 2011-14 AS PART OF THE 2013 REFRESH

1.0 INTRODUCTION

- 1.1 The 1998 Crime and Disorder Act required Crime and Disorder Reduction Partnerships (later renamed Community Safety Partnerships) to be set up and placed an obligation on local authorities and police to work together to implement a strategy to tackle crime and disorder in their area. Since this time further legislation has expanded the remit of the partnership and made more organisations, such as primary care trusts, also accountable for community safety. Over the past decade Community Safety Partnerships have encouraged a more joined up way of working which has contributed to a sustained fall in crime.

- 1.2 Every three years each Community Safety Partnership is required by law to produce a strategy, informed by strategic assessment, which outlines the activities it plans to undertake. The strategy identifies priorities and trends for the partnership to focus on and provides a framework for delivery. The strategy is refreshed annually to respond to emerging threats and to ensure the priorities are still relevant.
- 1.3 The Safer North West Partnership (SNWP) brings together a number of agencies with a shared commitment to reducing crime and disorder in the District. The Partnership is made up of a number of organisations including;
- North West Leicestershire District Council
 - Leicestershire County Council (LCC)
 - Leicestershire Constabulary
 - Leicestershire Fire & Rescue
 - Leicestershire & Rutland Probation Trust
 - NHS Leicestershire County & Rutland
 - Leicestershire Fire Authority
- 1.4 The statutory agencies in the Partnership work closely with other agencies and individuals such as social housing providers, youth offending service, drug & alcohol service providers, youth groups, The Police and Crime Commissioner for Leicestershire and voluntary organisations amongst others. The Partnership aims to bring together people and organisations that are committed to having an impact on crime and disorder and who wish to support our local communities. The Partnership not only focuses on crime and disorder but strives to improve the general well being of all members of the community. By working together we can ensure that agencies are not working in isolation and that resources are targeted effectively where they are needed.
- 1.5 The Partnership will receive funding this year from Leicestershire's Police and Crime Commissioner (£12,000) and Leicestershire County Council (£7,112 for 6 months) to carry out community safety work. This is in addition to NWLDC's revenue budget allocation to community safety (£21,300).
- 1.6 The NWLDC Community Safety Team co-ordinates the work of The Safer North West Partnership and comprises;
Community Safety Team Leader- full time post
Anti-Social Behaviour Co-ordinator- full time post
Community Safety Officer- part time post

2.0 BACKGROUND

- 2.1 In the past year, crime in North West Leicestershire has reduced by 11% and anti-social behaviour is down almost 25%. This means that crime across the District has now fallen year on year for seven years and anti-social behaviour has fallen consistently for the past four years. As a result, there have been around 2,650 fewer victims of crime in NWL since 2004.

- 2.2 During the past year there have been many changes which have impacted upon community safety, significantly the election in November 2012 of Leicestershire's Police and Crime Commissioner (PCC), Sir Clive Loader. As a result, the way community safety partnerships are funded has changed dramatically which has reduced the funding available to The Safer North West Partnership and influenced amendments made to the Strategy for 2013/14.
- 2.3 As an interim measure, LCC have allocated 6 months funding to Community Safety Partnerships for 2013/14. This is in addition to the allocation from the PCC. This process was adopted for 1 year only to allow time to establish a formal commissioning process. The funding allocated to the Safer North West Partnership from the PCC must be spent on projects and initiatives that support the priorities contained within the PCC's Police and Crime Plan. From 2014, it is likely that Community Safety Partnerships will be asked to commission work which supports the PCC's priorities.

3.0 EVIDENCE EVALUATED FOR 2013 REFRESH

- 3.1 For the 2013 refresh, information was considered from The Partnership Strategic Assessment for North West Leicestershire which looks at levels of crime, views from the community on issues that matter to them, highlights any changes since the last assessment and helps identify current and possible future crime, disorder and substance misuse trends.
- 3.2 Consideration was given to the most recent police crime figures in the District and a workshop was held with partner agencies to decide the priorities and strategic direction of the Partnership for 2013/14.
- 3.3 The priorities of The Police and Crime Commissioner, Leicestershire County Council and North West Leicestershire District Council were also considered.

4.0 THE PRIORITIES

- 4.1 For 2013, it has been decided that the three main priorities will remain however some changes have been made to the supporting actions under each priority in response to trends and challenges that have emerged over the past year.
- 4.2 The 3 priorities for the Safer North West Partnership for 2013/14 are as follows;
- Priority 1: **Tackling Crime**
 - Priority 2: **Focus on Anti-Social Behaviour**
 - Priority 3: **Support our Communities**
- 4.3 There will be 2 cross-cutting themes supporting these main priorities;
- Supporting North West Leicestershire Families
 - Communicate our work

5.0 KEY ACTIONS

- 5.1 The Community Safety Strategy is supported by an outcome focussed Action Plan which will be monitored by the SNWP. The action plan is divided into three sections to reflect each of the Partnership priorities.
- 5.2 The Action Plan contains 16 headline actions which are broken down into tasks or milestones to be achieved each quarter. These actions are;

Priority 1:

- Focus on crime hotspots
- Target high profile events, such as Download Festival and Strawberry Fields
- Support CCTV and retail radio, including ANPR
- Work to reduce re-offending by Supporting North West Leicestershire Families programme
- Work to reduce domestic abuse, especially repeat victims
- Support work for young people who are victims of sexual exploitation and abuse
- Educate the public on how they can prevent becoming a victim of crime
- Support the PCC's Police and Crime Plan

Priority 2:

- Improve customer experience when reporting ASB
- Support vulnerable victims of ASB
- Encourage more young people to engage in positive activities (including mentoring with twenty:twenty, diversionary activities provided by Supporting Futures and community projects through the Respect initiative)
- Provide early intervention for families experiencing difficulties
- Utilise partnership assets to positively influence the behaviour of ASB perpetrators

Priority 3:

- Improve safety on our roads and pathways
- Work to reduce the harm caused by drug and alcohol misuse in our communities
- Work with groups supporting vulnerable members of our community

6.0 DELIVERING THE STRATEGY

- 6.1 The delivery framework for the strategy has been updated to include the Supporting North West Leicestershire Families CAT and the newly formed Safeguarding Action Group. The Safeguarding Action Group is made up of NWLDC designated safeguarding officers and was established to ensure cases for which safeguarding forms have been submitted are being adequately monitored and appropriate referrals have taken place.

6.2 The Community Safety Strategy will be supported by the Action Plan which will be actively monitored by the SNWP. Status reports and updates will inform the Partnership of progress against the action plan at the bi-monthly partnership meetings.

7.0 FUTURE STRATEGY REFRESH

7.1 The Community Safety Strategy for 2014-17 will be drafted by The Safer North West Partnership early in 2014 using information from the Strategic assessment, community consultation and crime figures. This Strategy will support the priorities contained within the PCC's Police and Crime Plan.



Safer North West
Partnership

North West Leicestershire Community Safety Strategy 2011-2014

2013 Refresh

“We will work together with those who live, work and visit North West Leicestershire to maintain and improve pride in our communities”





Foreword

In the past year, crime in North West Leicestershire has reduced by 11% and anti-social behaviour is down 25%. This means that crime across our area has now fallen year on year for seven years and anti-social behaviour has fallen consistently for the past four years. This means there have been around 2,650 fewer victims of crime since 2004.

This is a fantastic achievement of which we should all be proud and it serves to remind us that North West Leicestershire is a safe place to live and work.

As chairman of the Safer North West Partnership I am pleased to introduce the annual refresh of the Community Safety Strategy 2011-14. Since it was last refreshed in early 2012 the Partnership has worked to focus on its priorities with outstanding success but we acknowledge that there is more to be done in the final year of our strategy to further protect the communities of North West Leicestershire.

The Community Safety Partnership is made up of members of a range of organisations including North West Leicestershire District Council, Leicestershire Police, Fire and Rescue Service, Probation Service, the NHS and the voluntary sector - all working together to make our communities better and safer places to live.

Relationships between partners have gone from strength to strength and this has enabled us to work together effectively to drive down crime and disorder. For 2013, we will be offering even greater support to families within North West Leicestershire that are experiencing difficulties. The 'Supporting Families' team, working with the Community Safety Partnership, will offer targeted intervention to those families who are experiencing the greatest difficulties. This should make a tangible difference to the outcomes for these families.

This year will bring its challenges, not least some financial ones; however as a strong and well established partnership I am confident we will be able to overcome them. Only by working together, and building on our previous success, can we make an even greater contribution to improving the quality of life for those people who live in, work in and visit North West Leicestershire.

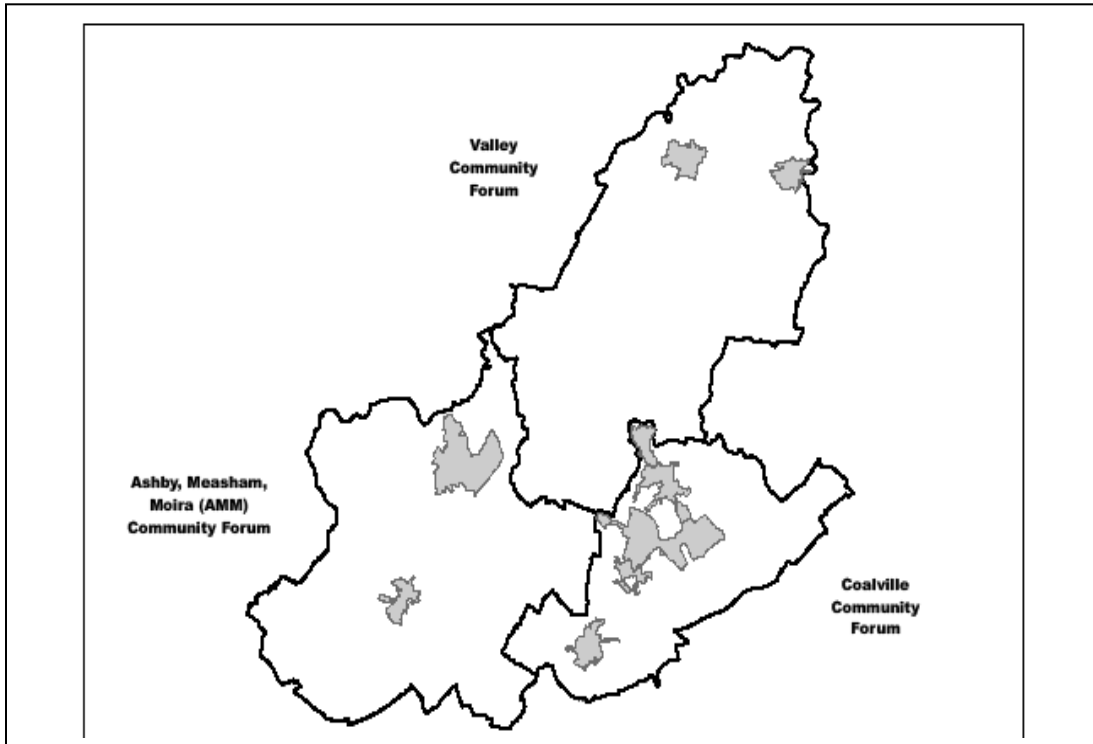
Councillor Trevor Pendleton
Portfolio Holder for Regeneration and Planning, NWLDC
Chair of Safer North West Partnership

Introduction

North West Leicestershire is located in the heart of the Midlands and has a number of unique characteristics which bring their own community safety considerations. The district is home to East Midlands Airport and Donington Park race circuit in the north and is also part of the National Forest. There are stretches of the M1 motorway and other major commuter routes passing through the district.

The district is divided into three community forum areas which are shown below.

North West Leicestershire Community Forum Areas



Over the past decade community safety partnerships have encouraged a more joined up way of working which has contributed to a sustained fall in crime. The 1998 Crime and Disorder Act required Crime and Disorder Reduction Partnerships (CDRPs) be set up and placed an obligation on local authorities and police to work together to implement a strategy to tackle crime and disorder in their area. Since this time further legislation has expanded the remit of the partnership and made more organisations, such as primary care trusts, also accountable for community safety.

Every three years each community safety partnership is required by law to produce a strategy, informed by strategic assessment, which outlines the activities it plans to undertake. The strategy identifies priorities and trends for the partnership to focus on and provides a framework for delivery. The strategy is refreshed annually to respond to emerging threats and to ensure the priorities are still relevant.

The Safer North West Partnership brings together a number of agencies with a shared commitment to reducing crime and disorder in the district. The Partnership is made up of a number of organisations including;

- North West Leicestershire District Council

- Leicestershire County Council
- Leicestershire Constabulary
- Leicestershire Fire & Rescue
- Leicestershire & Rutland Probation Trust
- NHS Leicestershire County & Rutland
- Leicestershire Fire Authority

The statutory agencies in the Partnership work closely with other agencies and individuals such as social housing providers, youth offending service, drug & alcohol service providers, youth groups, the Police and Crime Commissioner for Leicestershire and voluntary organisations amongst others. The Partnership aims to bring together people and organisations that are committed to having an impact on crime and disorder and who wish to support our local communities. The Partnership not only focuses on crime and disorder but strives to improve the general well being of all members of the community. By working together we can ensure that agencies are not working in isolation and that resources are targeted effectively where they are needed.

Equality and Diversity has been considered throughout formulation of this three year plan. The Safer North West Partnership is committed to serving all members of its communities effectively and an equality impact assessment has been conducted for this strategy. The 2011 census found that 93,468 people are resident within North West Leicestershire, of which over 95% are classed as white. Based on the 2010 ONS data 21.3% of the population are of retirement age whilst residents aged 0-15 equates to 19%. The Partnership aims to ensure fair and equal access to services and support irrespective of race, religion, sex, age, sexual orientation, disability, gender reassignment, marriage and civil partnership or pregnancy/maternity.

Our vision for the Safer North West Partnership is to work together with those who live, work and visit North West Leicestershire to maintain and improve pride in our communities.

Our Priorities

The priorities in this plan were identified using the Safer North West Partnership Strategic Assessment which brings together analysis from a number of agencies. The assessment includes information on levels of crime, views from the community on issues that matter to them, highlights any changes since the last assessment and helps identify current and future crime, disorder and substance misuse trends.

After analysis of the Partnership Strategic Assessment, consideration was given to the most recent crime figures in the district and a workshop held with partner agencies to decide the priorities and strategic direction of the Partnership.

The Partnership decided that for 2013-2014 it will focus on three key priorities which are supported by two cross cutting themes. For each priority we have identified the ways we will work to achieve them.

- **Priority 1: Tackling Crime**
- **Priority 2: Focus on Anti-Social Behaviour**
- **Priority 3: Support our Communities**

There will be two crosscutting themes which will be considered under each of the main priorities. The work to support North West Leicestershire families needs to be closely aligned to this strategy as much of their work will support measures to reduce crime and disorder. We also need to communicate our work to our communities in their preferred format to ensure that those who live, work and visit North West Leicestershire are aware of the Partnership's work and how to access its support.

The Partnership acknowledges that in light of the Government Spending Review it is more important than ever to work together to deliver value for money for the communities we serve. The two cross cutting themes identified are;

- **Supporting North West Leicestershire Families**
 - Ensure that the work of the Safer North West Partnership supports local initiatives to providing timely family intervention
 - Families who are experiencing difficulties know how to access support
- **Communicate our work**
 - Ensure timely communication with our communities about issues that matter to them
 - Use all formats to communicate our work, including social media

For the 2013 refresh, it has been decided that the three main priorities will remain however the wording has been slightly amended and some changes have been made to supporting actions under each priority in response to trends that have emerged over the past year.

Priority 1- Tackling Crime

Addressing crime and its causes should be at the heart of any community safety strategy. It is now widely acknowledged that an effective approach to tackling crime is no longer centred purely on enforcement by the police. A more sophisticated approach needs to be taken which places crime in its wider context and addresses its underlying causes.

How will we tackle crime?

- Focus on hotspots, including music festivals 'Download' and 'Strawberry Fields'
- Support retail radio and CCTV, including ANPR (automatic number plate recognition), in our town centres to reduce crimes such as assault and shoplifting
- Work to reduce re-offending by supporting North West Leicestershire Families
- Work to reduce domestic abuse, especially repeat victims
- Support work for young people who are victims of child abuse and child sexual exploitation
- Educate the public on what they can do to prevent becoming a victim of crime

Groups which will support delivery;

Domestic Abuse Forum
Joint Action Group
CCTV Operations Group
Multi-Agency Risk Assessment Conference (Countywide meeting)
Substance Misuse Forum
Locality Partnership Group

How will we measure success?

- Overall crime figures in the district are further reduced
- Crime at Download Festival is further reduced
- Continue to engage with community groups to raise awareness of crime reduction measures
- The number of first time entrants to the youth justice system is reduced.

Priority 2- Focus on Anti-Social Behaviour (ASB)

Over the past year police data shows that ASB in the district has reduced by 24.6%, a fourth consecutive year on year reduction, a trend the Partnership wishes to continue. Anti-social behaviour can ruin the lives of those who live in the communities where it is committed and the Partnership aims to reduce the harm caused by such incidents.

How will we further reduce ASB?

- Support vulnerable victims of ASB
- Encourage more young people to engage in positive activities including mentoring (such as with twenty:twenty), community projects and sporting activities
- Provide early intervention for families experiencing difficulties
- Utilise the assets within the partnership to positively influence the behaviour of the perpetrators of ASB

Groups which will support delivery;

Joint Action Group (JAG)
Community Forums
Locality Partnership Group
ASB Delivery Group (Countywide meeting)

How will we measure success?

- Public confidence that effective action is being taken against ASB increases
- As a result, we may see an increase in reports of low-level anti-social behaviour
- More families and young people will be supported by mentoring and other support services
- An increase in the numbers attending diversionary activities arranged by partnership agencies.

Priority 3- Support our Communities

A number of work themes will sit under this priority which will all have the common aim of supporting our communities and helping them to feel safe. We will work to reduce the harm caused by drugs and alcohol by working with substance misuse service providers and addressing alcohol related criminality.

As part of supporting community wellbeing we will also work with partner agencies to improve safety on the District's roads and pathways.

How will we support our communities?

- We will work to reduce the harm caused by alcohol and drug misuse in our local communities
- Work with groups supporting vulnerable people within our community such as disability groups (including mental health), minority groups, domestic abuse agencies, the Multi-Agency Traveller Unit and others
- Improve safety on our roads and pathways

Groups which will support delivery;

Substance Misuse Forum

Community Forums

Hate Incident Monitoring Group (Countywide meeting)

Road Safety Groups

Supporting North West Leicestershire Families Corporate Action Team

Locality Partnership Group

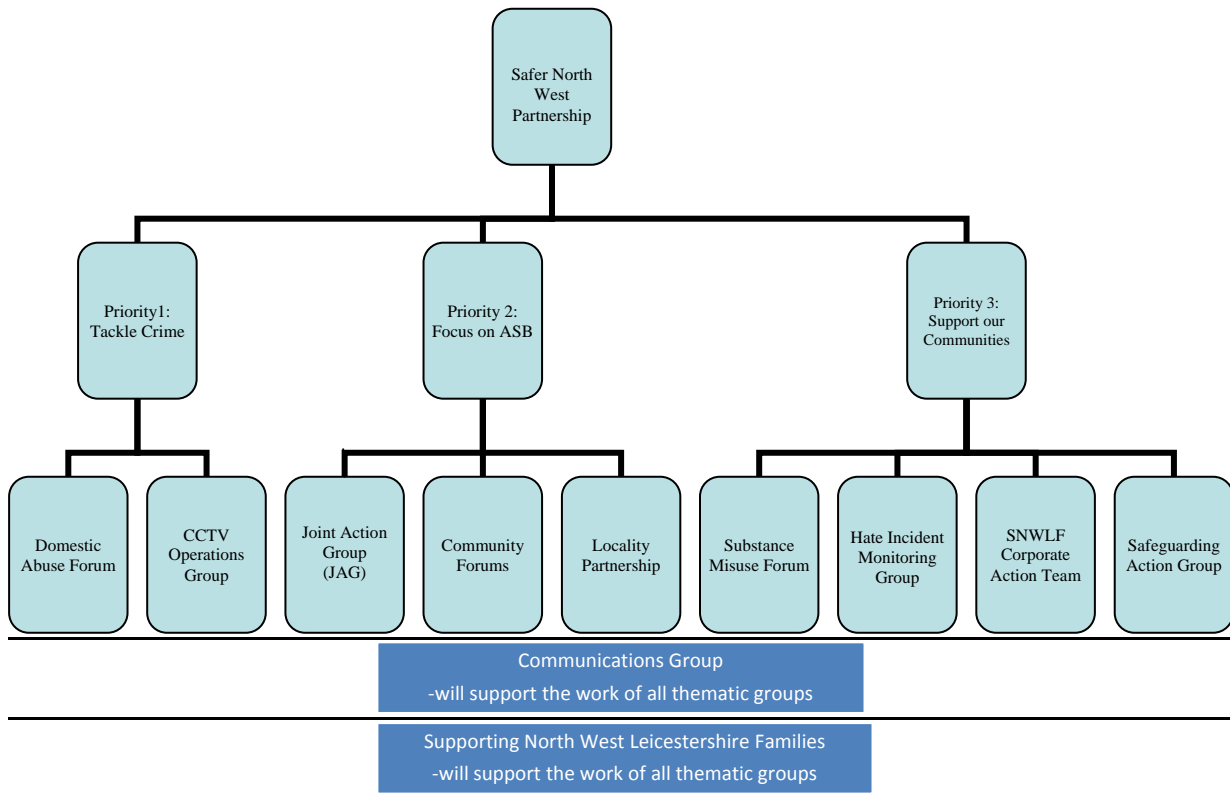
Safeguarding Action Group

How will we measure success?

- Clients who have received substance misuse treatment have outcomes which address their specific needs
- Increase partnership performance on casualty reduction on our roads and pathways
- Supporting North West Leicestershire Families criteria are met and more families are accessing support.

Delivering the Strategy

The diagram below illustrates how the Community Safety Strategy will be delivered by the Safer North West Partnership. In addition, the Partnership will be supported by a number of overarching countywide and district groups.



The Partnership has access to a variety of funding streams and resources will be allocated against the priorities in the strategy. Projects will be evaluated and must demonstrate value for money.

Glossary

ANPR: Automatic Number Plate Recognition

ASB: Anti-Social Behaviour

CCTV: Closed Circuit Television

CDRP: Crime and Disorder Reduction Partnership

CSP: Community Safety Partnership

JAG: Joint Action Group

MARAC: Multi-Agency Risk Assessment Conference (which discusses high risk domestic abuse cases and puts measures in place to reduce harm)

NWLDC: North West Leicestershire District Council

SNWLF: Supporting North West Leicestershire Families

SNWP: Safer North West Partnership.